

## HSD-261P-NET

[www.asia.security.honeywell.com](http://www.asia.security.honeywell.com)

### 26x WEATHER PROOF TDN IP OUTDOOR SPEED DOME

Honeywell HSD-261P-NET Weatherproof IP Speed Dome Camera is designed for full time surveillance in extreme environments. The camera is True Day/Night housed by IP66 rated dome enclosure to prevent the camera from damage by ingress of dust and heavy rain. Whether it is installed indoor in stable environment or outdoor with unexpected weather change, the HSD-261P-NET always delivers reliable performance and vivid video image to protect asset and people security.

HSD-261P-NET provides consistent high coverage to capture video image of interest. Its 360° continuous rotation function and 26x zoom lens give you the flexibility to view target area with desired width and depth.

HSD-261P-NET adopts state of art H.264 compression technology, which offers 25 fps 4CIF high quality video stream and disk saving recording. The camera can support up to 8 users at the same time, which enables multiple users to get access to important video images simultaneously.

#### Market Opportunities

The combination of the latest digital technology and advanced video processing makes HSD-261P-NET an ideal network camera for large-scale surveillance in cities, roads, airports, government facilities etc. It is also suitable for areas where accurate and intense surveillance is essential that requires excellent quality delivery and cost-effective solution.

#### FEATURES

- 26x optical zoom and 12x digital zoom up to 312x zoom
- 4CIF, 25 fps supporting 8 users simultaneous access
- True Day/Night with ICR on
- Weatherproof with IP66 rated enclosure, heater and fan built in
- High speed of pan up to 300°/sec and tilt up to 120°/sec
- High performance memory with 128 presets and 3 self-learning auto tracks
- High speed preset at 360 °/sec with high accuracy with +/-0.1°
- Built-in web browser for easy configuration
- Support HUS and operation through HJC-5000 keyboard



# HSD-261P-NET

www.asia.security.honeywell.com

## 26x WEATHER PROOF TDN IP OUTDOOR SPEED DOME

### SPECIFICATIONS

Model	HSD-261P-NET
PTZ Part	
Image Sensor	1/4" Ex-view HAD CCD, Sony
Minimum Illumination	1.0lx (1/50 sec); 0.07lx (1/3 sec) / ICR-ON mode: 0.15lx(1/60 sec); 0.01lx (1/3 sec)
True Day/Night	ICR
Electronic Shutter	1/3~1/10,000 Sec
Signal-to-Noise Ratio	> 50dB(AGC Close)
BLC	BLC ON/OFF
Aperture Range	F1.6(wide)~F3.8(tele) for 261
Focal Length	f=3.5mm~91mm for 261
Angular Field of View	54.2°(wide)-2.2°(tele) for 261
Vector Scan Group	6
Pan Angle	360° Rotation Capability
Tilt Angle	0° ~90°
Pan Speed	0. 1°~300°/Sec
Tilt Speed	0. 1°~120°/Sec
Preset Speed	360°/Sec
Accuracy	0.1°
Preset Position	128 Maximum
Auto Scan	ON/OFF
White Balance	Manual/Auto/Indoor/Outdoor/ATW
Zoom	26x Optical Zoom, 12x Digital Zoom for 261
PTZ Tour (Pattern)	3 Programmable, 120 Seconds
Protocol	Pelco D/P
Power Input	24VAC 2A 60Hz/50Hz, Surge Protector
IP Part	
Video Encoder	H.264, Motion JPEG simultaneously
Video Profile	4CIF / CIF / QCIF
Encoder Capability	H.264 4CIF+CIF+QCIF @ 25fps
Frame Rate	Up to 25fps PAL for all profiles
Streaming	Constant and variable bit rate
Security	Password protection, IP address filtering
Access User	8 simultaneous unicast users
Ethernet	10/100M auto negotiation
Alarm Event	Go to PTZ preset position, and go to a tour; Notification via email, File upload via FTP or email
Video Buffer	Pre- and post- alarm buffering
Protocol	TCP, UDP, HTTP, NTP, DDNS, RTP, RTSP, IGMP

## HSD-261P-NET

www.asia.security.honeywell.com

### 26x WEATHER PROOF TDN IP OUTDOOR SPEED DOME

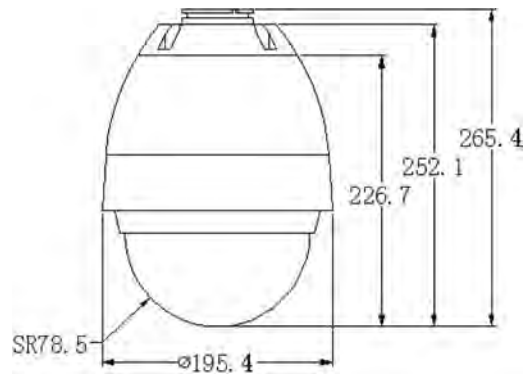
#### SPECIFICATIONS

Interface	
Analog Video Out	1 BNC
Ethernet Port	1 10/100Base-T
Alarm in/out	1 DI / 1 DO
Power Input	24VAC 2A power adaptor
Others	
IP 66	Yes
Heater	Yes
Fan	Yes
Certification	FCC, CE

#### ORDERING

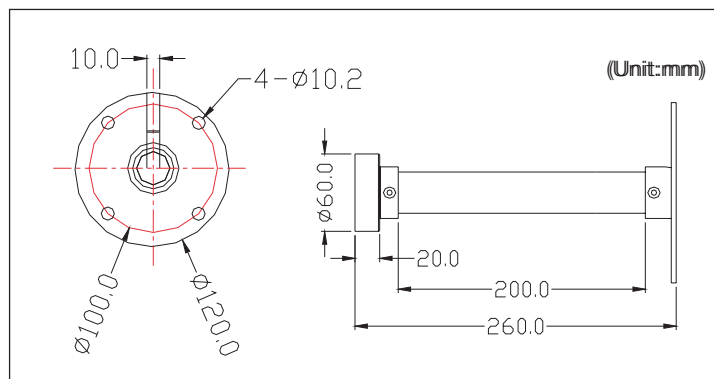
HSD-261P-NET: 26x Outdoor True Day/Night IP Speed Dome, AC 24V, PAL

#### DIMENSIONS



#### ACCESSORIES MOUNTS

HSDCM1	Outdoor Ceiling Mount
Construction	Zincification Pipe
Finish	Spray Powder
Dimension	See the Drawing
Environment	Indoor and Outdoor
Weight	1.96lbs (0.88kg)
Max Load	27.1lbs (12.2kg)
Wind Load	121kph



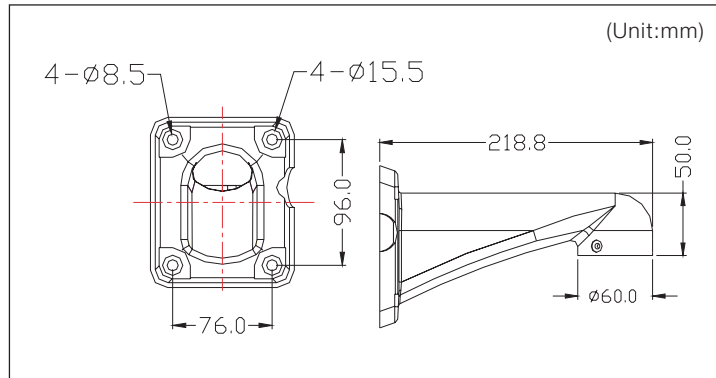
# HSD-261P-NET

www.asia.security.honeywell.com

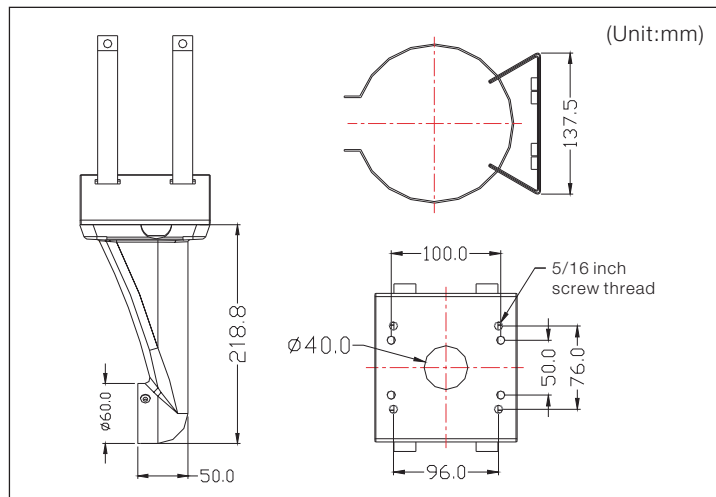
## 26x WEATHER PROOF TDN IP OUTDOOR SPEED DOME

### ACCESSORIES MOUNTS

HSDWM1	Outdoor Wall Mount
Construction	Aluminium
Finish	Spray Powder
Dimension	See the Drawing
Environment	Indoor and Outdoor
Weight	1.44lbs (0.645kg)
Max Load	24.7lbs (11.1kg)
Wind Load	121kph



HSDPMA1	Pole Mount Adapter
Construction	Aluminium
Finish	Spray Powder
Dimension	See the Drawing
Environment	Indoor and Outdoor
Weight	1.73lbs (0.78kg)
Max Load	25.6lbs (11.5kg)
Wind Load	121kph



For more information:

Security Asia Pacific Headquarters  
 Security Australia  
 Security Australia National Sales Hotline  
 Security China  
 Security China Customer Service Hotline

Tel: (86) 21-2219 6888  
 Tel: (61) 2-9353 7000  
 Tel: 1300 765 532  
 Tel: (86) 21-2219 6888  
 Tel: 400-8800-330

Security Hong Kong  
 Security India  
 Security Korea  
 Security Singapore  
 Security Taiwan

Tel: (852) 2405 2323  
 Tel: (91) 124 4029800  
 Tel: (82) 2-799 6130  
 Tel: (65) 6333 9563  
 Tel: (886) 2-2245 1000

www.asia.security.honeywell.com  
 security.ap@honeywell.com

**Honeywell Security Group**  
 Automation & Control Solutions  
 Honeywell International Inc.  
 www.security.honeywell.com

Dec 2010  
 © 2010 Honeywell International Inc.

**Honeywell**